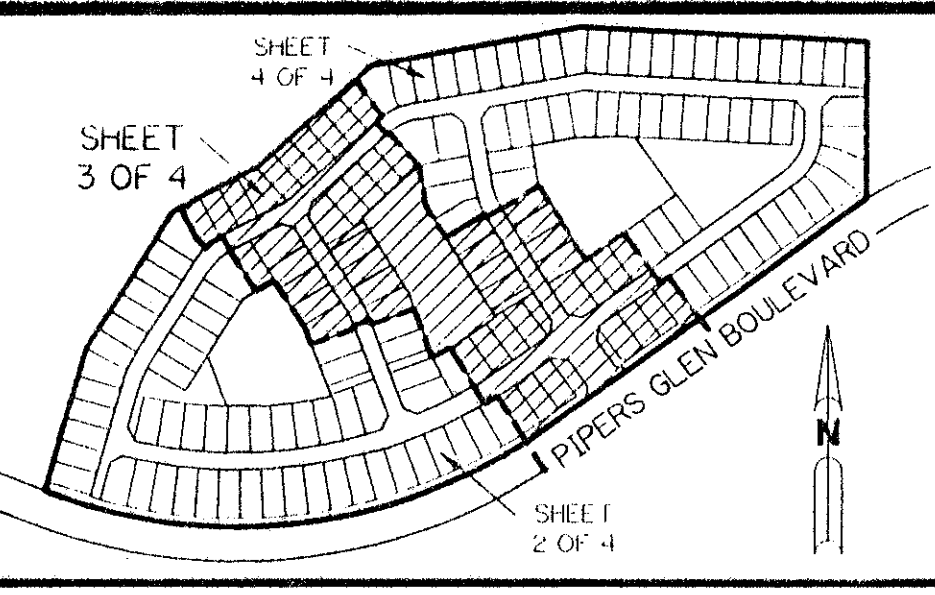


# PIPERS GLEN - PARCEL "E"

# 57

BEING A PARCEL OF LAND LYING IN SECTIONS 3 AND 4, TOWNSHIP 46 SOUTH, RANGE 42 EAST, AND A PORTION OF TRACTS 1, 31, AND 32 OF BLOCK 64 OF PALM BEACH FARMS COMPANY PLAT NO. 3, AS RECORDED IN PLAT BOOK 2, PAGES 45 THROUGH 54, INCLUSIVE, AND THAT RIGHT-OF-WAY ABANDONED ACCORDING TO OFFICIAL RECORD BOOK 3566, PAGE 1728, OF THE PUBLIC RECORDS OF PALM BEACH COUNTY, FLORIDA.

SHEET 3 OF 4 MARCH, 1995



KEY MAP



*Pet. 80-212D  
ALOC. #0003  
5/3/3/K*



SCALE: 1" = 40'

TRACT "L2"  
WATER MANAGEMENT TRACT  
(SHALL BE MAINTAINED BY THE WESTCHESTER COMMUNITY MASTER ASSOCIATION, INC. WITHOUT RECOURSE TO PALM BEACH COUNTY)  
1.392 ACRES

- LEGEND:
- PERMANENT REFERENCE MONUMENT, PLS #4213
  - △ PERMANENT CONTROL POINT, PLS #4213
  - ∠ DELTA ANGLE
  - A ARC LENGTH
  - BE BUFFER EASEMENT
  - DE DRAINAGE EASEMENT
  - L.M.A.E. LAKE MAINTENANCE ACCESS EASEMENT
  - L.M.E. LAKE MAINTENANCE EASEMENT
  - L.W.D.D. LAKE WORTH DRAINAGE DISTRICT
  - T.R. NOT RADIAL
  - N.T.S. NOT TO SCALE
  - NO NUMBER
  - O.E. OVERHANG EASEMENT
  - O.R.B. OFFICIAL RECORD BOOK
  - P.B. PLAT BOOK
  - P.G.S. PAGES
  - P.L.S. PROFESSIONAL LAND SURVEYOR
  - R RADIUS
  - R/W RIGHT-OF-WAY
  - S.T. SURVEY TIE
  - U.E. UTILITY EASEMENT

SUBDIVISION # Pipers Glen Parcel E  
BOOK 75 PAGE 57  
FLOOD MAP # 200A  
QUAD # 36,51  
SE 80-212  
PUD NAME 3/4/46/142

THIS INSTRUMENT PREPARED BY  
PERRY C. WHITE P.L.S. 4213 STATE OF FLORIDA  
LAWSON, NOBLE AND ASSOCIATES, INC.  
ENGINEERS PLANNERS SURVEYORS  
WEST PALM BEACH, FLORIDA

(TOTAL)  
R=1260.00'  
Δ=57°00'00"  
A=1253.50'

*75/57  
0298-013  
PIPERS GLEN - PARCEL "E"*